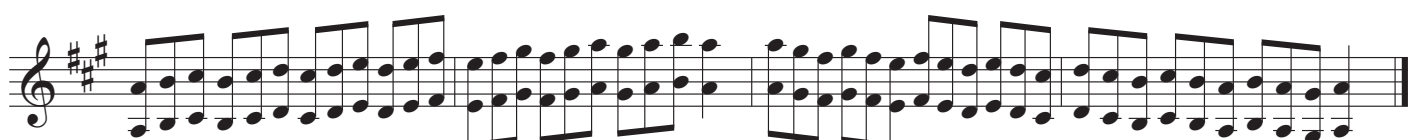
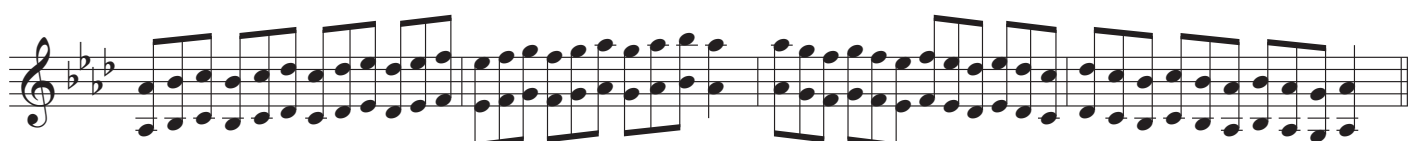
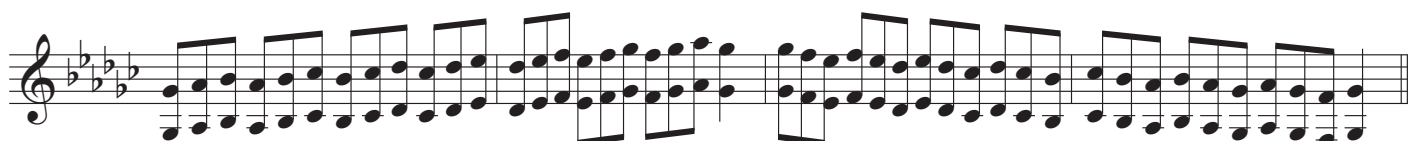
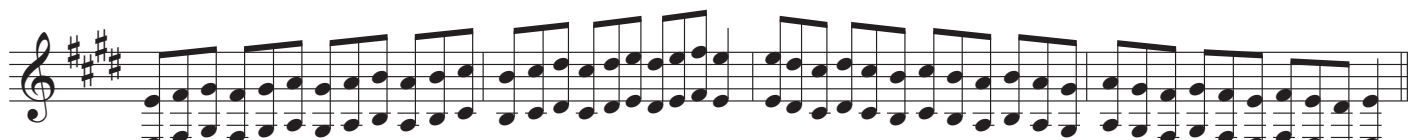
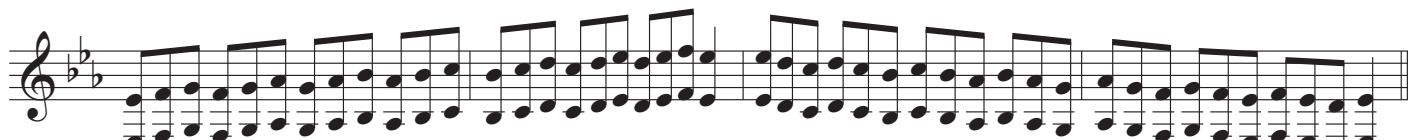
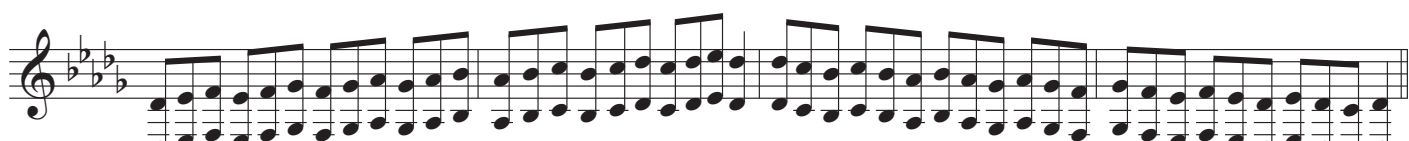
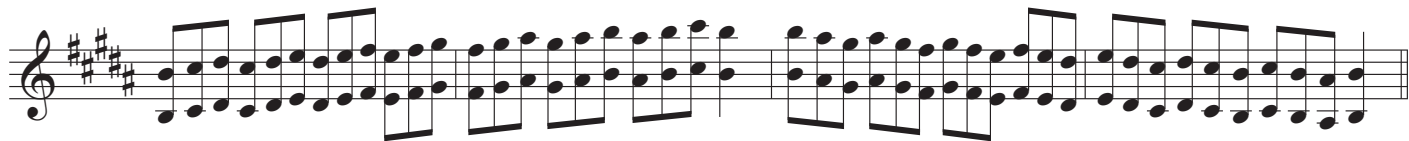
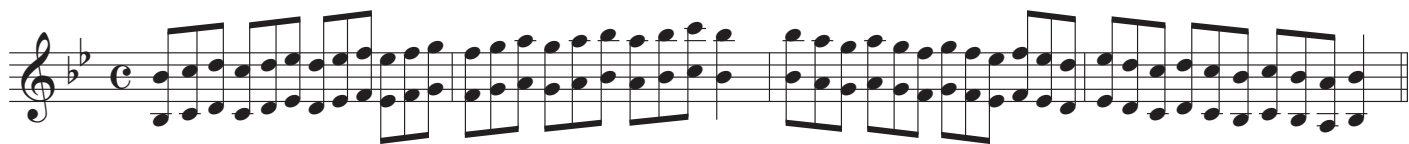


Scale Variation II

in C

Y.Yoshioka



Scale Variation II

in Bb

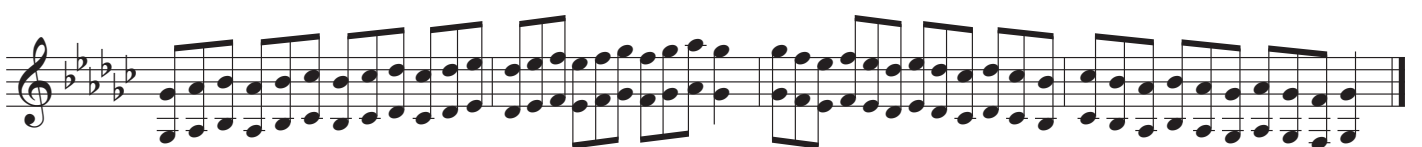
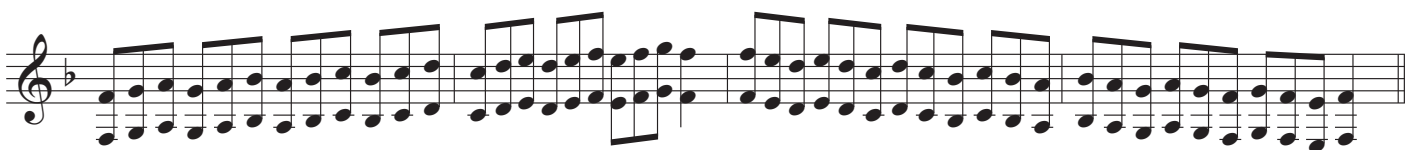
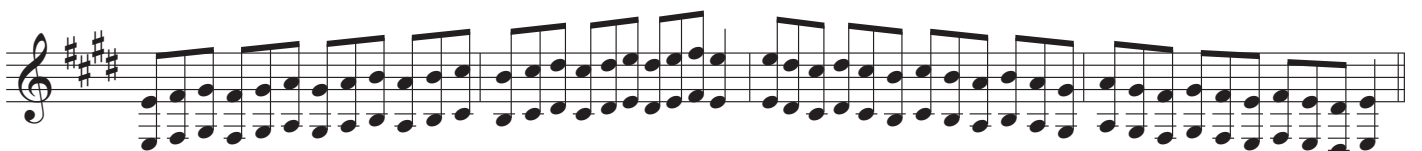
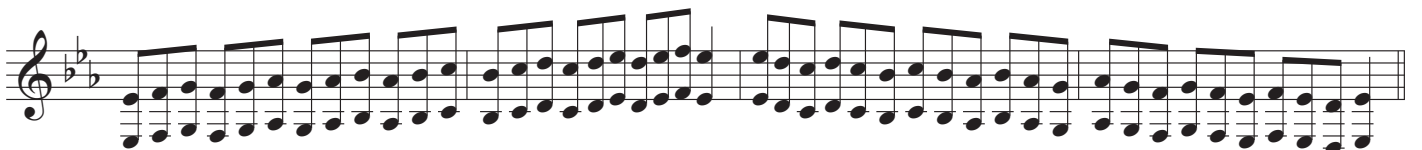
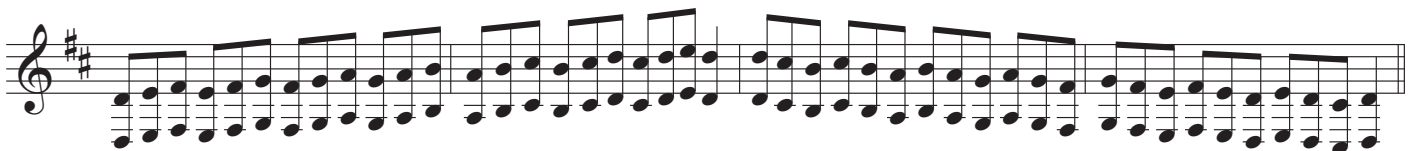
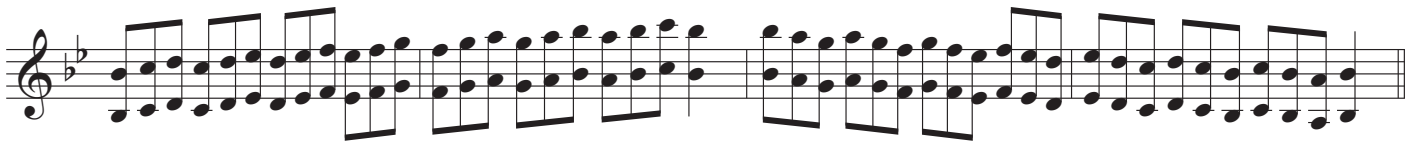
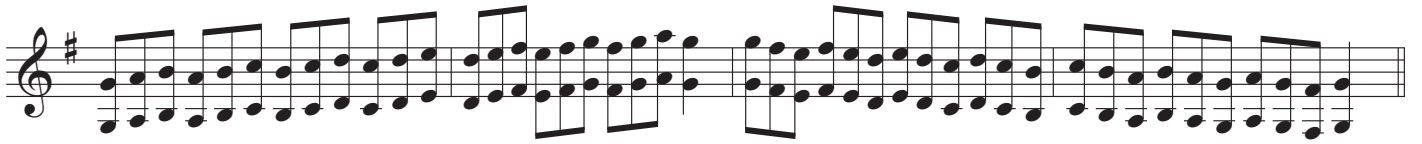
Y.Yoshioka

The image displays a musical score for 'Scale Variation II' by Y. Yoshioka, in the key of B-flat major. The score is organized into 12 horizontal staves, each containing a single line of music. The notation is primarily eighth-note and sixteenth-note patterns, often grouped in pairs or fours. The key signature changes across the staves: the first staff is in B-flat major (two flats), the second in E-flat major (three flats), the third in A major (three sharps), the fourth in B-flat major (two flats), the fifth in A major (three sharps), the sixth in B-flat major (two flats), the seventh in E-flat major (three flats), the eighth in A major (three sharps), the ninth in B-flat major (two flats), the tenth in A major (three sharps), the eleventh in B-flat major (two flats), and the twelfth in A major (three sharps). Each staff begins with a treble clef and a key signature signature. The music is a continuous sequence of scale-like patterns, with some staves ending in a double bar line.

in Eb

Scale Variation II

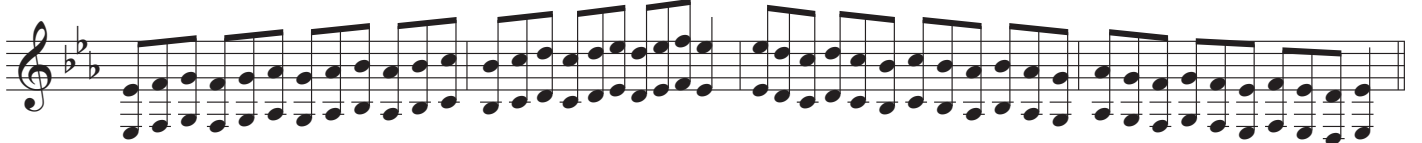
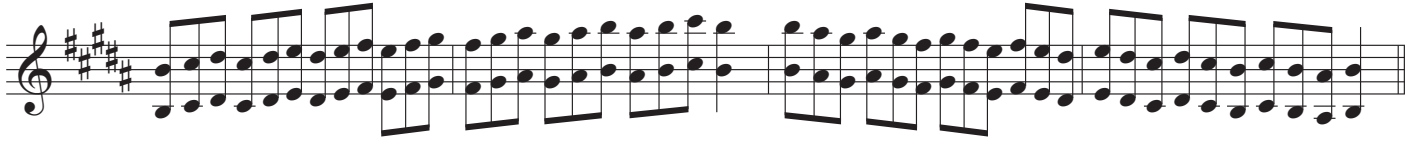
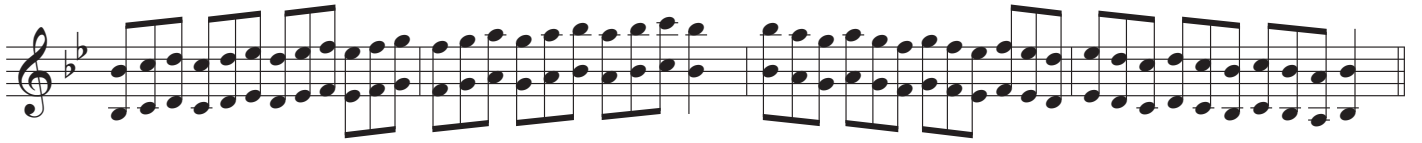
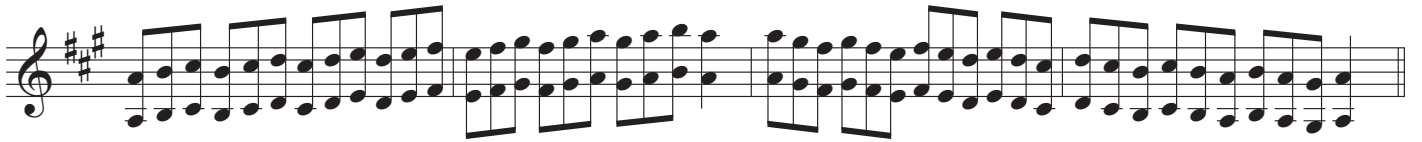
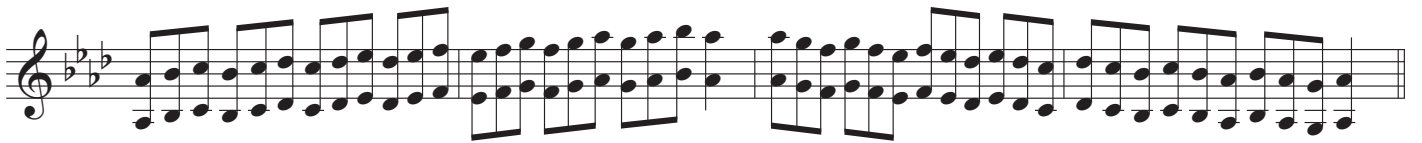
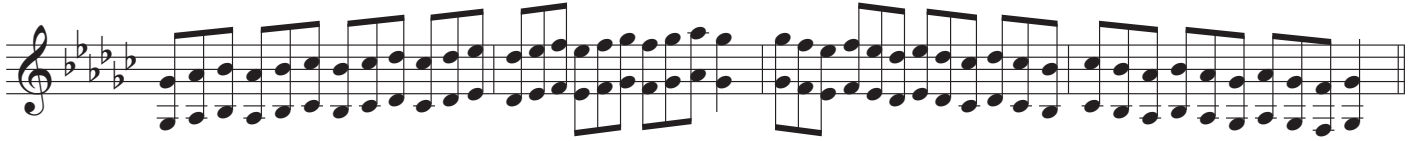
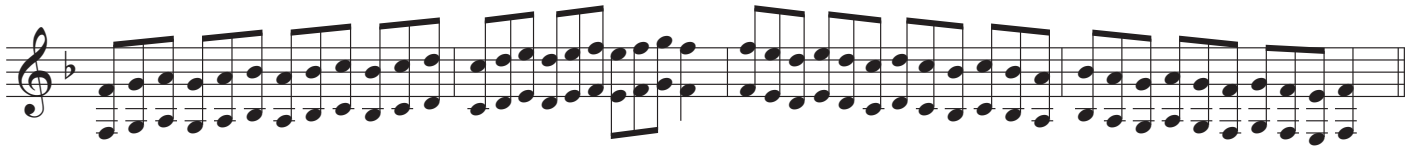
Y.Yoshioka



Scale Variation II

in F

Y.Yoshioka



Scale Variation II

in C

Y.Yoshioka

